

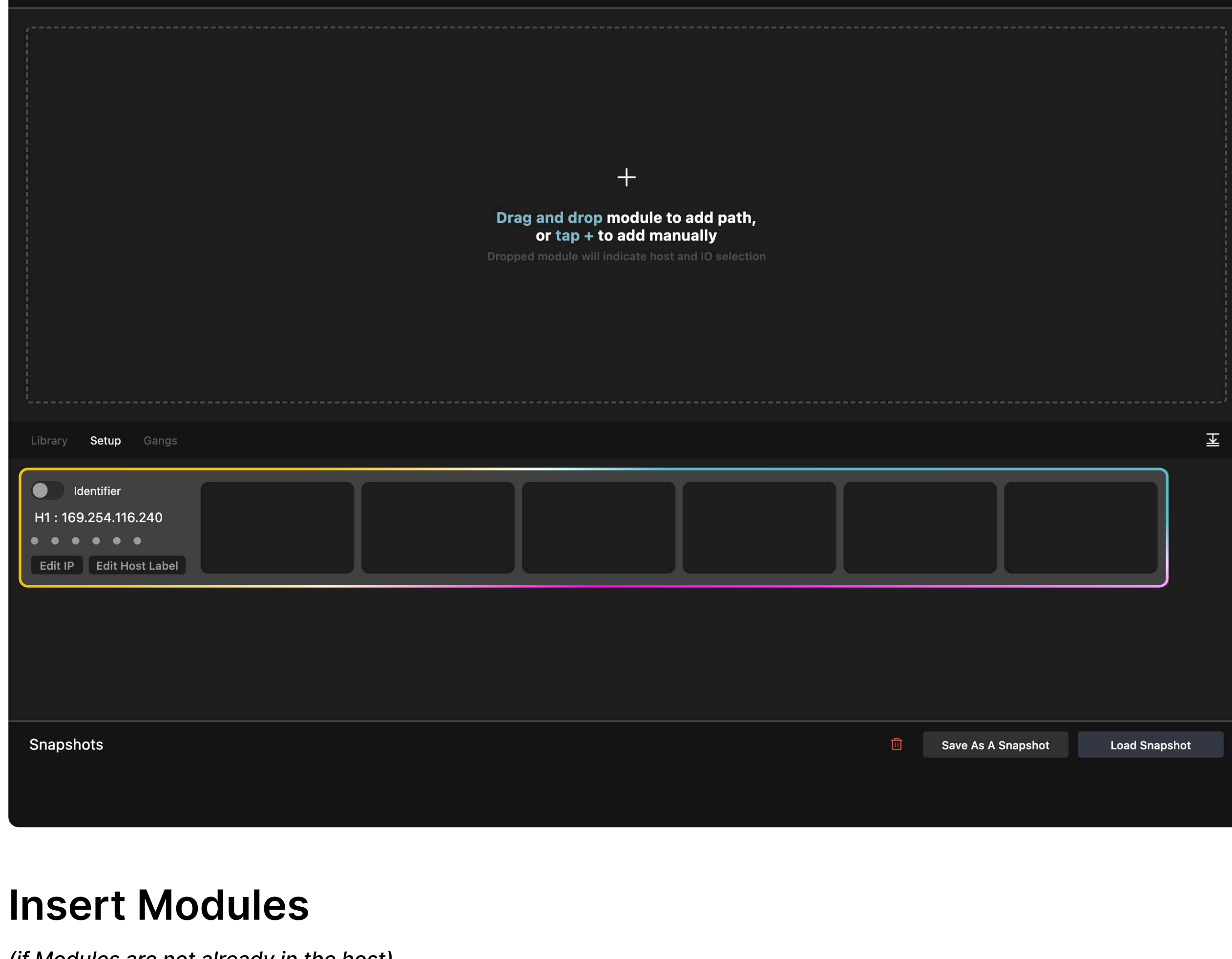
SEPIA Quick Start Guide

Connect the L6 Host

Plug in IEC power cord and switch on. Wait ~1 min for the system to initialise, you will hear multiple relay clicks.

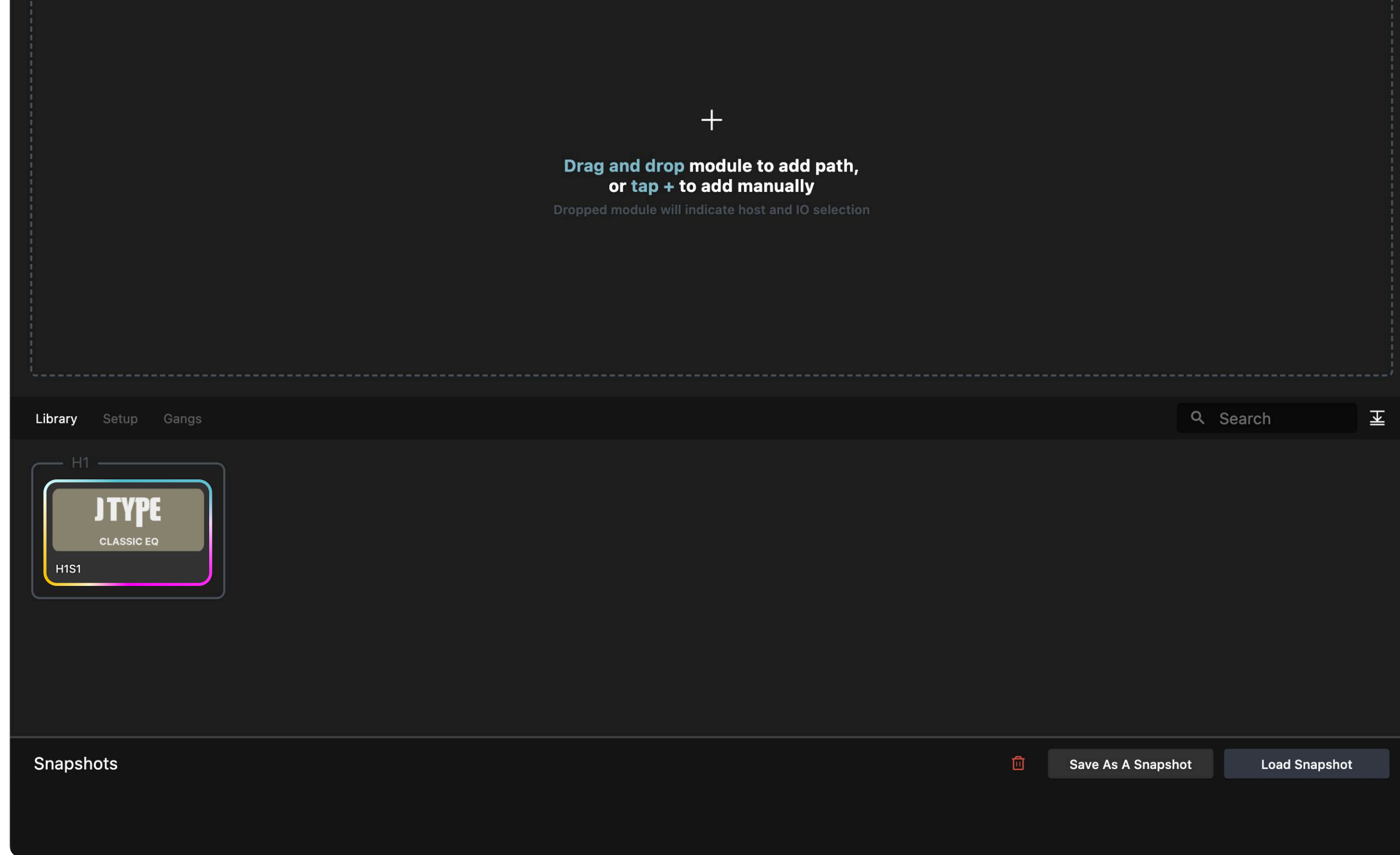
Network Setup

Connect host via Ethernet (Cat5) to your network or computer.
Launch SEPIA Client/Plugin on your device, the L6 Host will appear in the Setup tab.



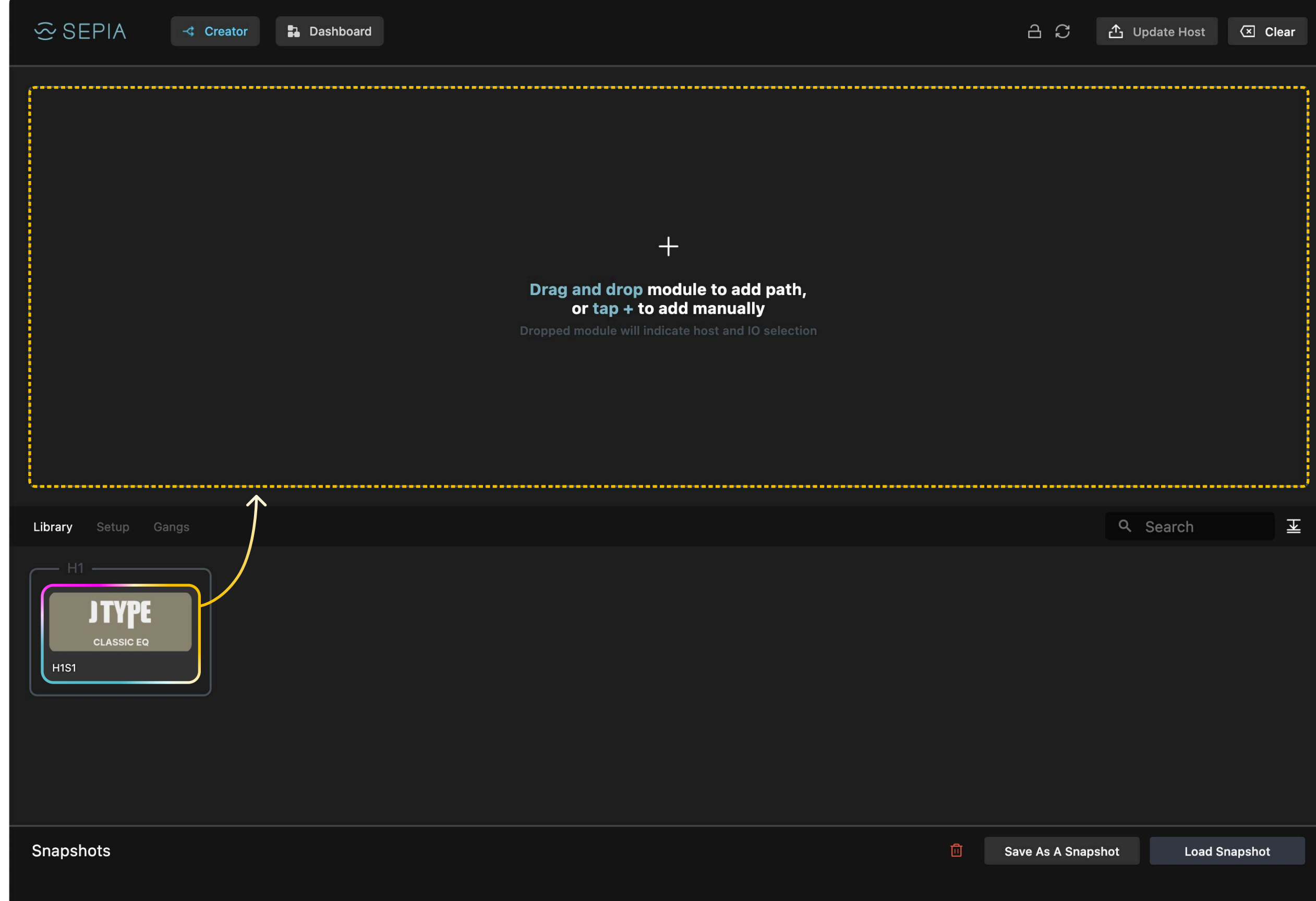
Insert Modules

(If Modules are not already in the host)
Push module firmly into slot until both buttons latch flush. Module appears in Library tab within ~20 seconds.

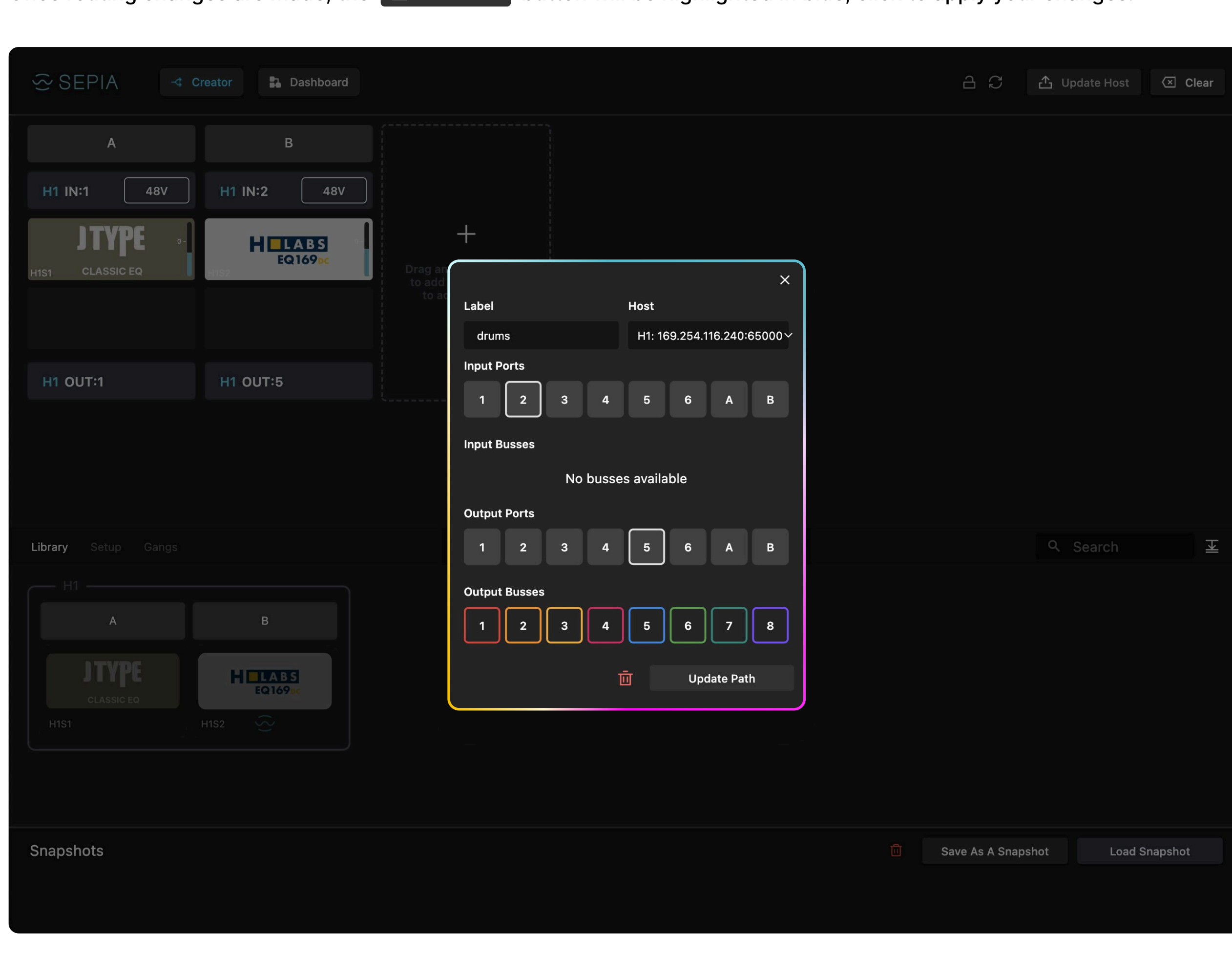


Creating Paths

Drag and drop modules into Creator for automatic path setup.



If necessary, change source/destination by clicking path label.
Once routing changes are made, the **Update Host** button will be highlighted in blue, click to apply your changes.



Available I/O

- 6 XLR inputs (these go directly to slots 1-6 and cannot be altered)
- 2 Assignable TRS Jack Aux inputs
- A1 Dante option card: 8 Assignable analog outputs
- N1 Dante/AVB option card: 8 assignable digital inputs and outputs
- Multiple internal busses



Dashboard View

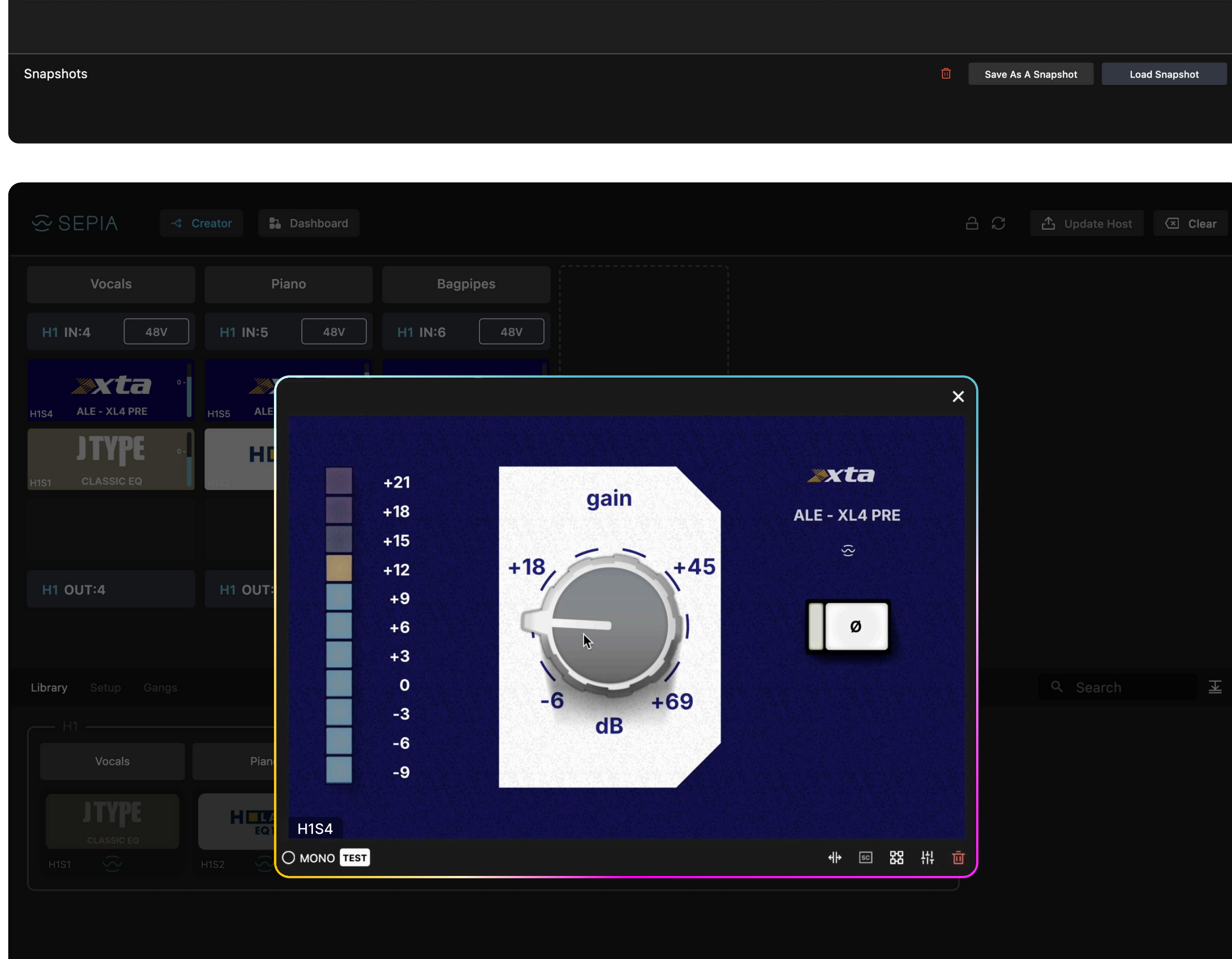
- Allows you to control the whole chain
- Global metering
- Reorder chains by dragging without changing routing
- Selectable density on the top right
- Focus on specific paths by expanding them with



Adjusting Module Settings

Access settings via the path on **Dashboard** or by clicking the module in **Creator**.
Modules must be in a path to pass audio.

Module controls are live but always click **Update Host** after routing changes.

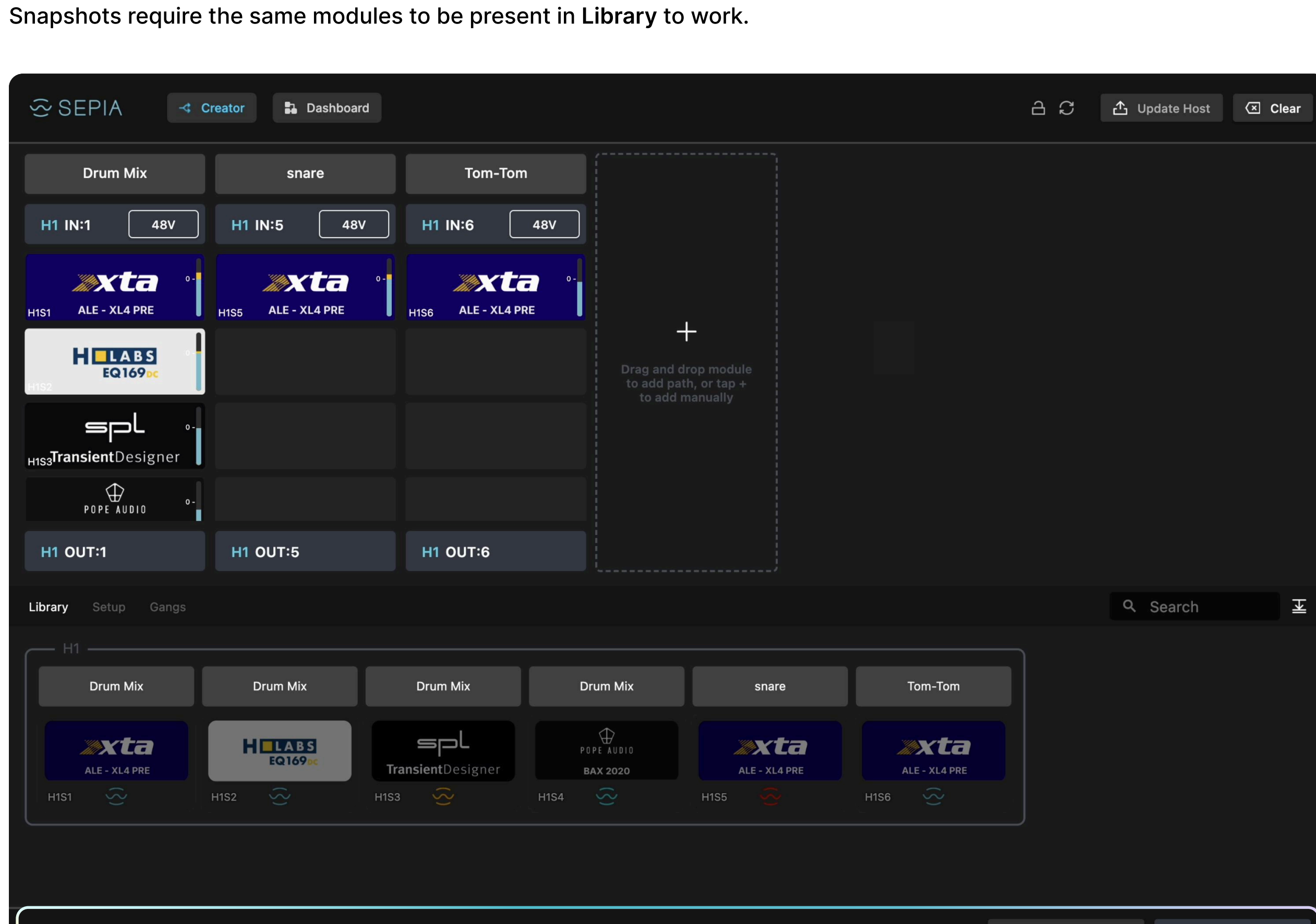


Saving & Recalling Setups (Snapshots)

Save by clicking **Save As A Snapshot**, recall by clicking snapshot name.

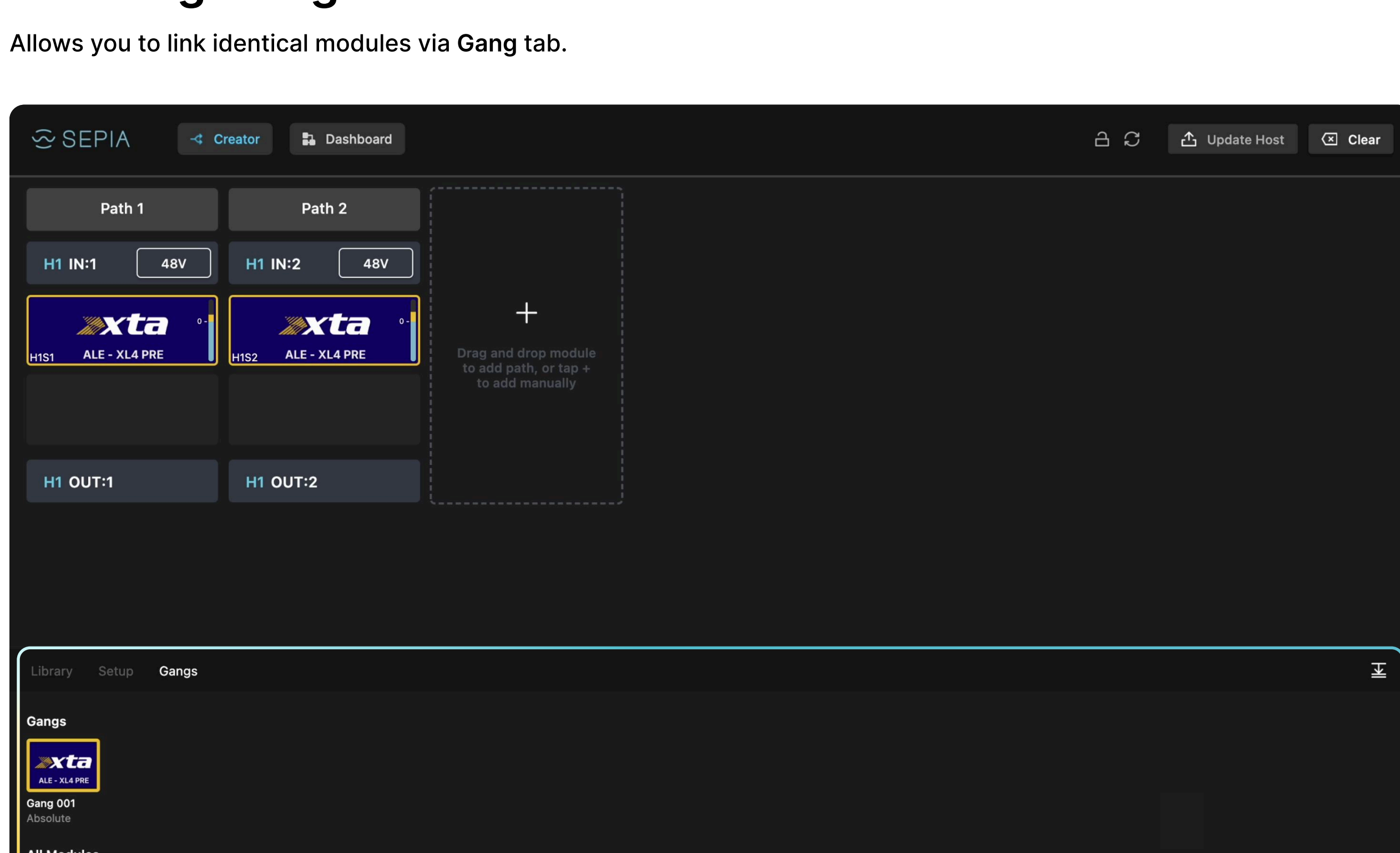
Load previous snapshots by pressing **Load Snapshot**.

Snapshots require the same modules to be present in Library to work.



Creating Gangs

Allows you to link identical modules via Gang tab.



SEPIA does not require a client software/controller or a network connection to pass audio, only to make changes.

When rebooting the SEPIA system, it will recall the last settings if modules have not changed. This recall takes ~30 secs after the boot sequence.